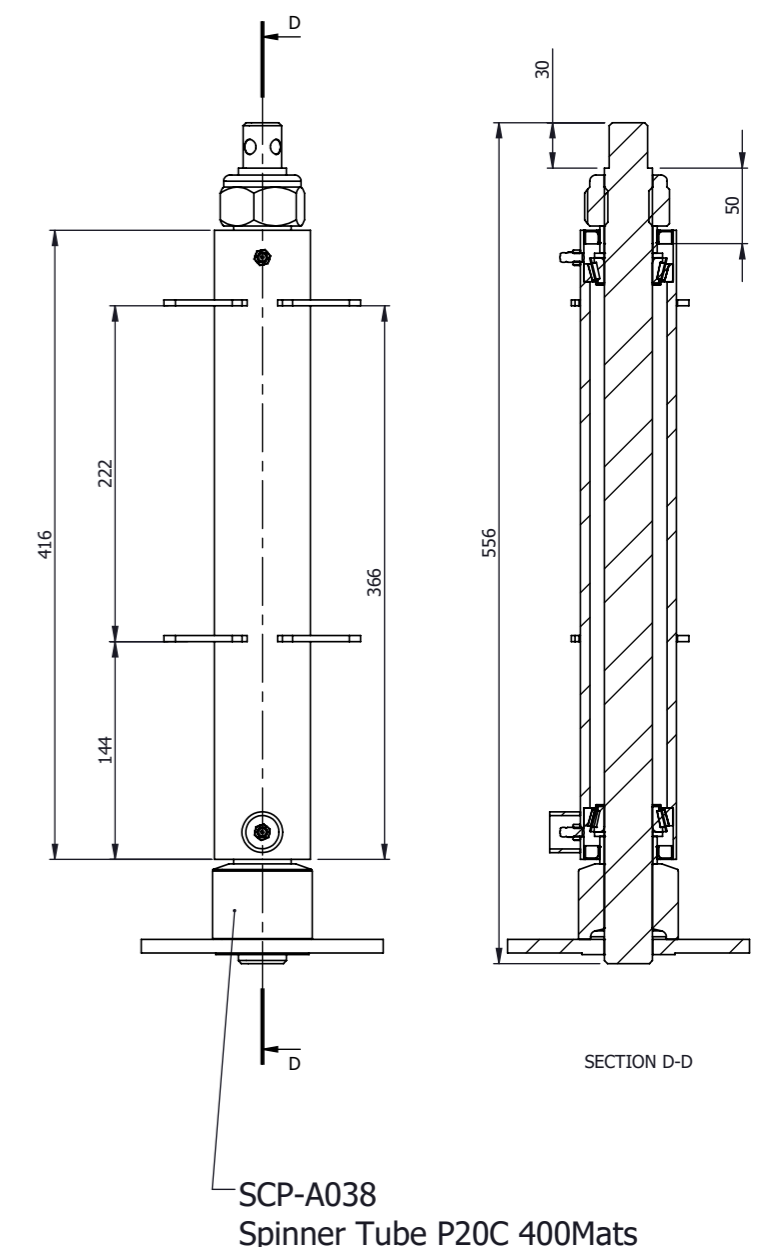
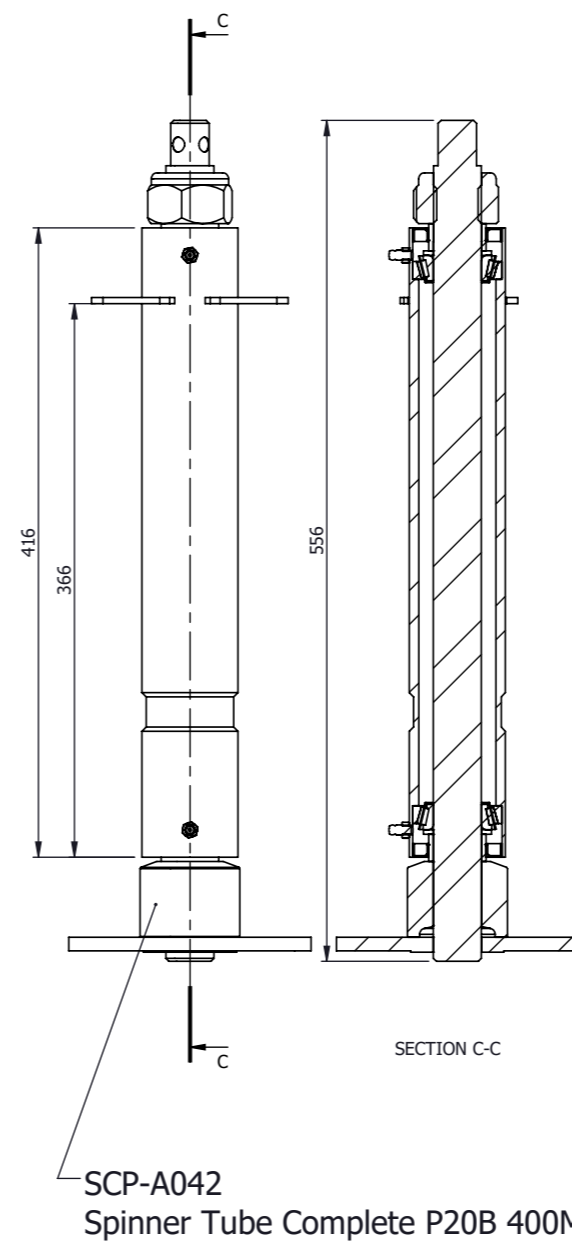
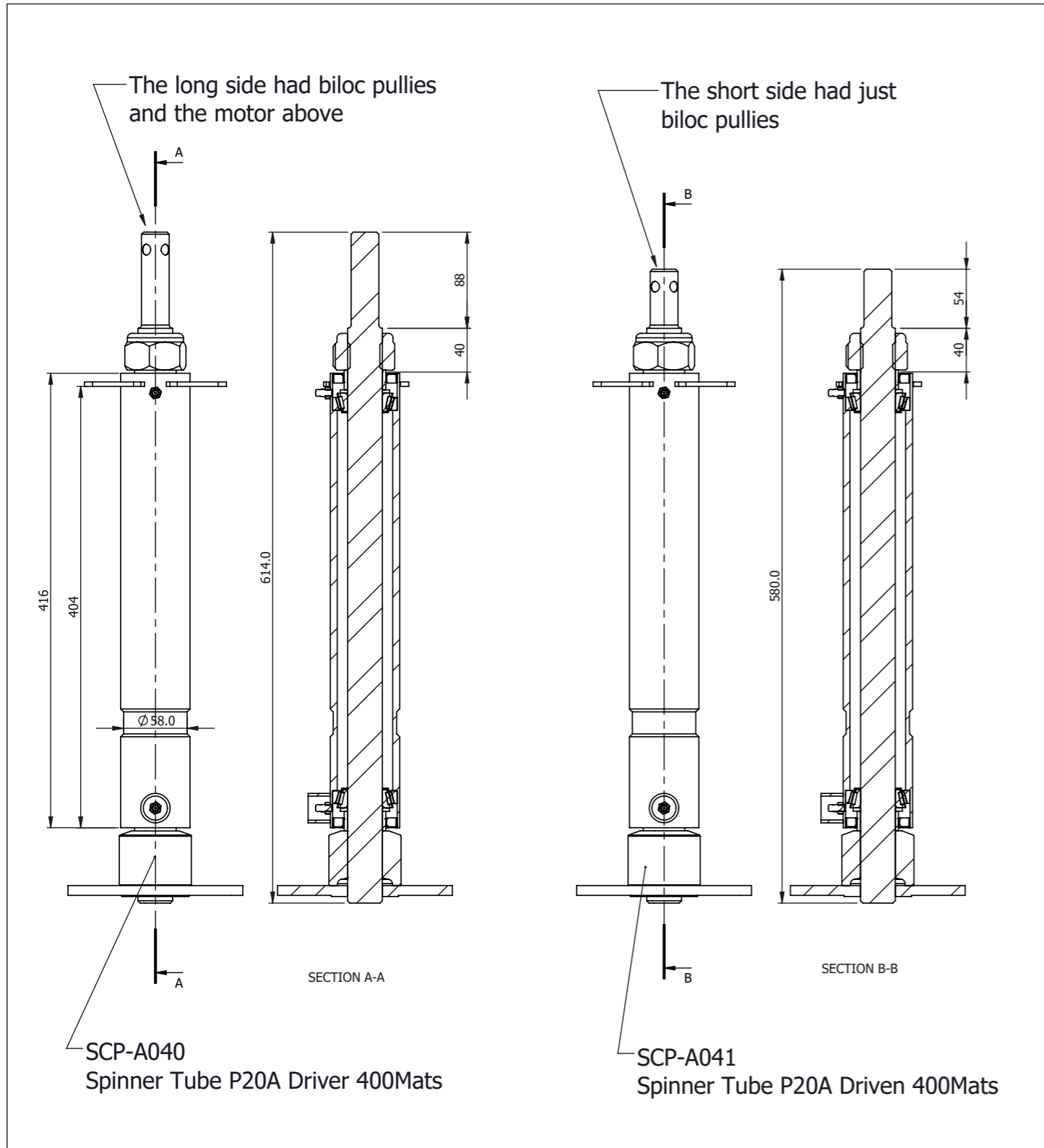


Spinner Tube Assembly Pre 12/05/1999 Single Motor

Spinner Tube Assy After 12/05/1999 Twin Motors "Flange and exhaust clamp" (Very few in the field)

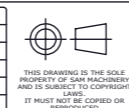
Spinner Tube Assy (All Current) Twin Motors "Double Flange"

Or



UNSPECIFIED TOLERANCES
±1.0 mm. PER M. - WELDMENT
±0.5° - ANGULAR
±0.1 mm. - MACHINED
GENERAL NOTES
DEBURR ALL EDGES
ALL DIMENSIONS IN mm.
WELD SYMBOLS TO ISO 2553

REV	DESCRIPTION	DATE



Model Number

Description
Spinner Tube 400 ID

DRAWN BY: TS	DATE: 09/02/2018	SCALE: (A4) 1:5
DWG No.:	REVISION:	SHEET:
Spinner Tube 400 ID -	2018/1	1